



# GMT MONTHLY MEMBERSHIP PROGRESS REPORT

Results as of: 5/31/2019

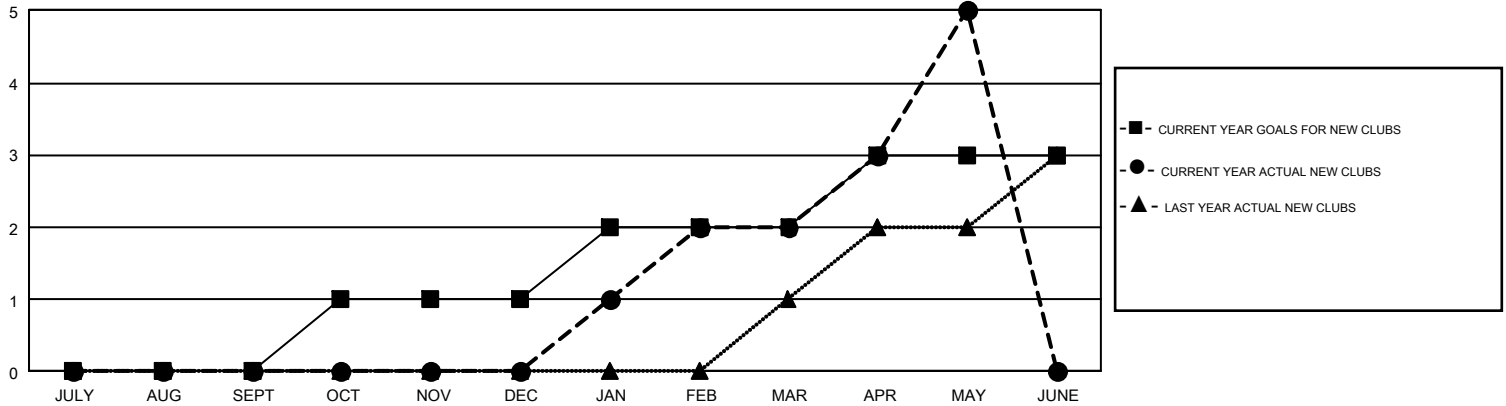
## GMT Constitutional Area 6-Afr, Group M

GMT: OPEN

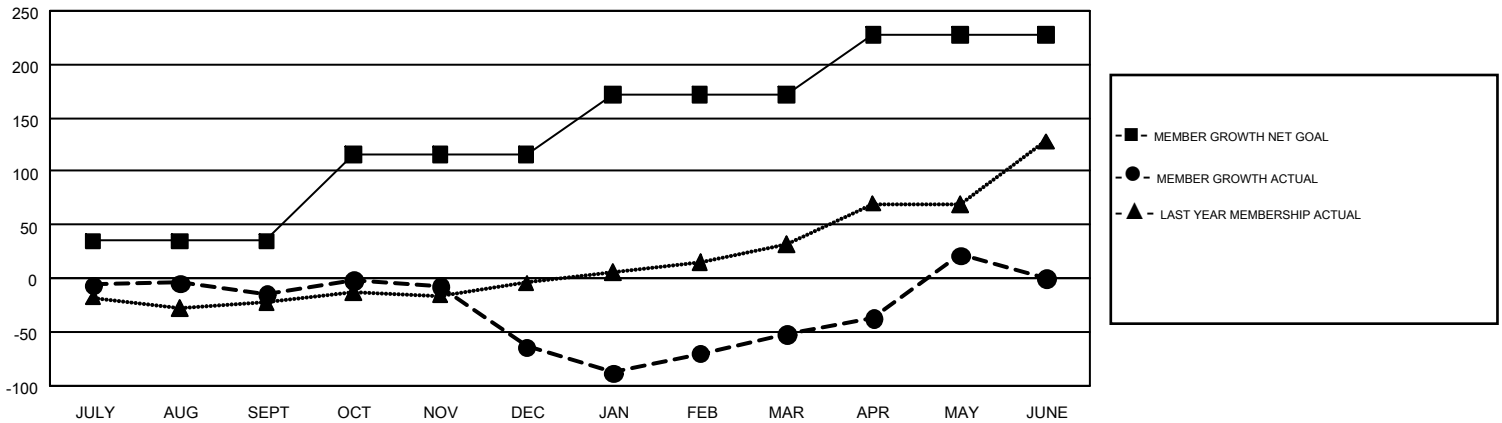
REPORT DOES NOT INCLUDE CLUBS IN UNDISTRICTED AREAS.

Clubs				Members			
RESULTS FOR 2018-2019				RESULTS FOR 2018-2019			
QUARTER	NEW CLUB GOAL	NEW CLUBS	DROPPED CLUBS	QUARTER	MEMBER GROWTH NET GOAL	MEMBER GROWTH ACTUAL	DROPPED MEMBERS ACTUAL (including transfers)
JULY/AUG/SEPT	0	0	0	JULY/AUG/SEPT	35	35	46
OCT/NOV/DEC	1	0	0	OCT/NOV/DEC	81	57	100
JAN/FEB/MAR	1	2	1	JAN/FEB/MAR	56	105	91
APR/MAY/JUNE	1	3	0	APR/MAY/JUNE	56	149	60

GOALS AND ACTUAL NEW CLUBS CUMULATIVE



GOALS AND ACTUAL MEMBERS CUMULATIVE



DROPPED CLUBS: 1	62 CLUBS OF 103 ADDED 1 OR MORE NEW MEMBERS	<b>GENDER DISTRIBUTION</b> MALE 1,854 (71.67%) FEMALE 733 (28.33%)
<b>DROPPED MEMBERS</b> DECEASED 11 CLUB CANCELLED 27 OTHER 259 <b>TOTAL 297</b>	<a href="#">CLICK HERE FOR CUMULATIVE MEMBERSHIP DATA</a>	TOTAL FAMILY UNIT MEMBERS 229 FAMILY MEMBERS PAYING HALF DUES 116